



# GET EGG-STRAN ROAD READY

Don't let car trouble crack your plans



**AUTO GEAR**  
**CYPRUS SEAT COVER SET**  
 11 Piece set  
 Available in black and grey or black and blue  
 SA100/1  
**320<sup>00</sup>**

- EASY TO CLEAN
- UNIVERSAL FIT



**113 PIECE**

**AUTO GEAR**  
 1/2" + 1/4" DRIVE TOOL KIT

TK113PC  
**2900<sup>00</sup>**

SCAN HERE TO DISCOVER MORE ABOUT THIS PRODUCT



**FREE**  
 1.8L THERMAL JUG

**Cosmoplast**  
 SCAN QR CODE FOR DETAILS

**NESTING COOLER BOXES**  
 3 Piece set High-quality, durable, food-safe plastic (polyethylene) with high-efficiency polyurethane foam insulation  
 1x 4L  
 1x 12L  
 1x 24L

CP1013  
**999<sup>00</sup>**

**21 UNIQUE TOOLS**



**LEM**  
**GOLIATH MULTITOO**  
 Open size: 180mm  
 Closed size: 115mm  
 Weight: 338g  
 Nylon pouch included  
 Available in black or silver

LEM001/2  
**1650<sup>00</sup>**

SCAN HERE TO DISCOVER MORE ABOUT THIS PRODUCT



**13 UNIQUE TOOLS**



**LEM**  
**SAMSON JAWBONE KNIFE**  
 Closed size: 115mm  
 Weight: 124g

**LOCALLY MANUFACTURED**

LEM005  
**900<sup>00</sup>**

SCAN HERE TO DISCOVER MORE ABOUT THIS PRODUCT



**New**  
**AUTO GEAR**  
**RECHARGEABLE AIR COMPRESSOR**

A portable unit for inflating tyres, sports gear, or inflatables. Powered by a 12V rechargeable battery, it delivers up to 150Psi pressure and includes built-in LED lighting and digital display. Great for emergencies or regular maintenance.

PU 11  
**750<sup>00</sup>**

- 2600MAh
- 150PSI
- 4 HOURS CHARGING TIME



EVERY PRO NEEDS A PAIR OF  
**PROpods**  
**WIN**

1400 PAIRS OF PROpods UP FOR GRABS!  
**ENTRY DETAILS ON THE BACK PAGE**

A PAIR OF LIMITED EDITION PROpods BY SPENDING R 1500 ON FAI PRO PRODUCTS DURING THE PROMOTION RSA ONLY

**TRAILER SPARES & TIE DOWNS**



**AUTO GEAR**

GOOSE NECK TOW BALL  
50mm

GA214

**280<sup>00</sup>**



**AUTO GEAR**

TOW HITCH BALL & PIN

GA216

**700<sup>00</sup>**



**AUTO GEAR**

TRAILER JACK CLAMP  
48mm

TJC01

**130<sup>00</sup>**



**AUTO GEAR**

JOCKEY WHEELS WITH BRACKET

1 230kg  
150mm wheel size

JW150

**570<sup>00</sup>**

2 700kg  
200mm wheel size

JW200

**1250<sup>00</sup>**

3 680kg  
Double wheel  
150mm wheel size

JWD

**1950<sup>00</sup>**



**AUTO GEAR**

TIE-DOWNS, STRAPS & HOLDERS



4 Ton load lock strap  
50mm x 12m

LH120

**250<sup>00</sup>**



4 Ton ratchet with tail

LH40

**170<sup>00</sup>**



4.8 Ton ratchet tie down  
12mm x 10m

LH50

**390<sup>00</sup>**



4 Ton load lock strap  
50mm x 9m

LH90

**190<sup>00</sup>**



4 Ton tow strap  
50mm x 3.5m

TR40

**110<sup>00</sup>**

**JERRY CANS & VEHICLE LIGHTS**



**AUTO GEAR**

METAL JERRY CANS

1 Green - 20L

JC02

**500<sup>00</sup>**

2 Green - 10L

JC03

**400<sup>00</sup>**

3 Green - 5L

JC04

**280<sup>00</sup>**

4 Yellow - 20L Diesel

JC06

**500<sup>00</sup>**



**AUTO GEAR**

GENERAL VEHICLE FIRST AID KIT

53 Piece first aid supplies

FA03M

**330<sup>00</sup>**



**AUTO GEAR**

MAGNETIC STROBE LIGHTS

12/24V  
Xenon  
2 Flashes per second

L-S2A

**380<sup>00</sup>**

12/24V  
Xenon  
4 Flashes per second

L-S4A

**400<sup>00</sup>**



**AUTO GEAR**

RECHARGEABLE FLASHING BEACON

39 LED  
2 Flashes per second  
USB rechargeable

L-S5RB

**950<sup>00</sup>**

**HELLA**

**VALUEFIT SUPERNOVA SPOTLIGHTS**  
6"  
2 Piece set with wiring harness  
1VF-634206-021  
**3800<sup>00</sup>**

**LED RETROFIT BULBS**

<b>New</b>	LED H7 12V 16W 5.7K	8GL-358450-191	<b>750.00</b>
	LED H8/9/11/16 12V	8GL-358450-201	<b>670.00</b>
	LED 9005/9006 12V	8GL-358450-211	<b>700.00</b>
	LED H4 12V 20W 5.7K	8GL-358450-221	<b>700.00</b>

**AUTO GEAR****COB HEADLAMP**

LED  
160 Lumens  
3W



LAM3WCOB  
**130<sup>00</sup>**

**AUTO GEAR****HEADLAMP**

CREE LED  
120 Lumens  
3W



LAMCREE4LED  
**160<sup>00</sup>**

**TruckLamp****WARNING TRIANGLE**

Large



WS1205-1  
**70<sup>00</sup>**

**TORCHES, LAMPS & TYRE MAINTENANCE****AUTO GEAR****2-WAY ADJUSTABLE COIL SPRINGS**

Restores lift to spring up to 2-3/4"



CSA1  
**120<sup>00</sup>**

**AUTO GEAR****COIL SPRING COMPRESSORS**

For repair or replacement of shocks and struts  
Compresses coil springs



CSC1  
**250<sup>00</sup>**

**AUTO GEAR****TUBELESS TYRE REPAIR KIT**

17 Piece set  
5 x sealing plugs, rasp tool, needle insert tool, 5 x CO<sub>2</sub>, 16g cartridges, small knife, tube plug cement, and CO<sub>2</sub> canister valve adaptor



TR17PC  
**450<sup>00</sup>**

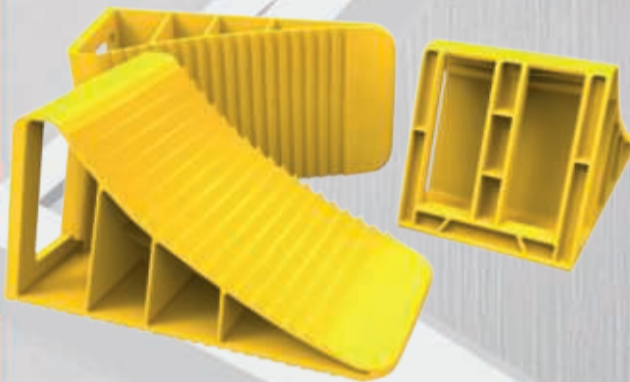
**SAFELoad****MIGHTY CHOCKS**

20 Ton

MC20T  
**180<sup>00</sup>** each

5 Ton

MC5T  
**90<sup>00</sup>** each

**AUTO GEAR****TUBELESS TYRE PLUGS**

10 Piece set



TR10PC  
**25<sup>00</sup>**

**AUTO GEAR****DRIVEWAY GAUGE**

Tyre inflator driveway gauge



DG15  
**220<sup>00</sup>**

**AUTO GEAR****AIR COMPRESSOR IN CASE**

150Psi  
12V  
Air flow rate: 30l/pm



PU08  
**470<sup>00</sup>**

**AUTO GEAR****HAND PUMP**

Heavy duty



PU60  
**170<sup>00</sup>**

**AUTO GEAR****WHEEL SPACERS**

2 Piece set  
Aluminium

3mm

WHS3  
**90<sup>00</sup>**

6mm

WHS6  
**100<sup>00</sup>**

9mm

WHS9  
**120<sup>00</sup>**



WITH SPACERS



WITHOUT SPACERS

**AUTO GEAR****AIR COMPRESSOR & TYRE REPAIR KIT**

100Psi  
12V  
6 Piece tyre repair kit includes:  
2 x screwdrivers  
1 x rasp tool  
1 x needle tool  
1 x needle nose pliers  
1 x cutter knife



TRKIT01  
**500<sup>00</sup>**

**ADDITIVES & LUBRICANTS**



**MIDAS LIQUID GOLD**

**MULTIGRADE OIL**  
20W-50  
For petrol & diesel

1L **MI20W-1**  
**60<sup>00</sup>**

5L **MI20W**  
**280<sup>00</sup>**



**MIDAS LIQUID GOLD**

**MONOGRADE OIL**  
SAE-40  
For older high-mileage vehicles & petrol engines

1L **MI40-1**  
**60<sup>00</sup>**

5L **MI40**  
**260<sup>00</sup>**



**MIDAS LIQUID GOLD**

**MULTIGRADE OIL**  
15W-40  
For diesel

1L **MI40TD-1**  
**65<sup>00</sup>**

5L **MI40TD**  
**300<sup>00</sup>**



**MIDAS LIQUID GOLD**

**SEMI-SYNTHETIC OIL**  
10W-40  
For petrol & diesel

1L **MI10W-1**  
**75<sup>00</sup>**

5L **MI10W**  
**320<sup>00</sup>**



**MIDAS LIQUID GOLD**

**FULLY SYNTHETIC OIL**  
5W-40  
For petrol & diesel

1L **MI5W40-1**  
**90<sup>00</sup>**

5L **MI5W40**  
**420<sup>00</sup>**



**MIDAS LIQUID GOLD**

**FULLY SYNTHETIC OIL**  
5W-30  
For petrol & diesel

1L **MI5W30-1**  
**100<sup>00</sup>**

5L **MI5W30**  
**470<sup>00</sup>**



**MIDAS LIQUID GOLD**

**GEAR OIL**  
80W-90  
GL-5 EP  
5L

**M80W905**  
**330<sup>00</sup>**

**Win** 1 of 100 Jerseys



**SEE BACK PAGE**  
for competition details



**HELIX ULTRA PROFESSIONAL**

5W-30  
For petrol & diesel  
5L

550040224  
**650<sup>00</sup>**

**HELIX HX7 SYNTHETIC OIL**

10W-40  
For petrol & diesel  
5L

550053709  
**459<sup>00</sup>**

**HELIX HX8 SYNTHETIC OIL**

5W-40  
For petrol & diesel  
5L

550053711  
**499<sup>00</sup>**



**Wynn's**

**PETROL INJECTOR CLEANER**

375ml

**W518**  
**80<sup>00</sup>**

SCAN HERE TO DISCOVER MORE ABOUT THIS PRODUCT



**Wynn's**

**THROTTLE BODY AND AIR INTAKE CLEANER**

375ml

**W533**  
**80<sup>00</sup>**

SCAN HERE TO DISCOVER MORE ABOUT THIS PRODUCT



**Castrol**

**GTX MULTIGRADE OIL**

15W-40  
For diesel  
5L

3359202  
**339<sup>00</sup>**



**Castrol**

**MAGNATEC FULLY SYNTHETIC OIL**

10W-40  
For petrol & diesel  
5L

3433499  
**449<sup>00</sup>**



**Castrol**

**BUY** any participating 5L Castrol Oil & keep your till slip

**TEST** Hi an WhatsApp to 067 346 1627

**LIFE DAD** Your till slip photo on the WhatsApp chat

**CHECK** Check if you've won

**BUY** any participating 5L & stand a chance to **WIN** 1 of 10 Makro vouchers weekly!

10 vouchers weekly for 10 weeks. Worth 10 000 each.



Promo dates: 1 March – 30 April 2026  
RSA Only.

\*Participating products: EDGE (PETROL), EDGE, EDGE, MAGNATEC (PETROL, DIESEL, TURBO) & STRONG (PETROL & DIESEL)



**SPANJAARD**

**ENGINE CLEANERS**

500ml

1 Water based

51080502  
**25<sup>00</sup>**

2 Solvent based

51080501  
**40<sup>00</sup>**

Blue Red

SCAN HERE TO DISCOVER MORE ABOUT THIS PRODUCT



**SPANJAARD**

**BRAKE CLEANER**

500ml

50320500  
**79<sup>00</sup>**

SCAN HERE TO DISCOVER MORE ABOUT THIS PRODUCT



**SPANJAARD**

**RADIATOR FLUSH**

375ml

53500202  
**50<sup>00</sup>**

SCAN HERE TO DISCOVER MORE ABOUT THIS PRODUCT



**Holts**

**ANTIFREEZE & SUMMER COOLANT**

1L

Available in yellow/blue/green/red

AF1/B/G/R

**55<sup>00</sup>**

SCAN HERE TO DISCOVER MORE ABOUT THIS PRODUCT



**AUTO GEAR**

**CAR COVERS**

Elastic sewn into front & rear hems for snug fit

Small	CC001	<b>450.00</b>
Medium	CC002	<b>470.00</b>
Large	CC003	<b>500.00</b>
X-Large	CC004	<b>540.00</b>
XX-Large	CC005	<b>600.00</b>



**AUTO GEAR**

**SPRAYERS**

1 1.5L

SPRY01  
**70<sup>00</sup>**

2 5L

SPRY02  
**190<sup>00</sup>**

3 16L

SPRY03  
**450<sup>00</sup>**



**AUTO GEAR**

**RECHARGEABLE VACUUM CLEANER**

2500Ah  
100W  
Hepa Filter

- USB CHARGER
- WET AND DRY USE
- 7.4V POWER INPUT

VC55  
**490<sup>00</sup>**



**AUTO GEAR**

**SQUEEGEE**

Red Plastic handle - 50cm

SQ013  
**70<sup>00</sup>**



**AUTO GEAR**

**SQUEEGEE**

Black Plastic handle - 50cm

SQ015  
**70<sup>00</sup>**



**AUTO GEAR**

**PVA SYNTHETIC CHAMOIS**

430x320mm

CA30  
**40<sup>00</sup>**

430x640mm

CA60  
**65<sup>00</sup>**



**MIDAS FORMULA+**

**ANTIFREEZE & SUMMER COOLANTS**

1L 50%  
Blue/green/red/yellow

MAF1B/R/Y/G  
**45<sup>00</sup>**

1L 96%  
Blue/green/red/yellow

MAF1-96B/R/Y/G  
**70<sup>00</sup>**

5L 50%  
Blue/green/red/yellow

MAF5B/R/Y/G  
**200<sup>00</sup>**

5L 96%  
Blue/green/red/yellow

MAF5-96B/R/Y/G  
**300<sup>00</sup>**

**MIDAS FORMULA+**

**HYDRAULIC BRAKE & CLUTCH FLUID**

Premium DOT 4  
500ml

MBF1  
**50<sup>00</sup>**

**MIDAS FORMULA+**

**MULTI-PURPOSE GREASE**

500g

MPG1  
**50<sup>00</sup>**

**MIDAS FORMULA+**

**RTV BLACK SILICONE**

70ml

MBS90  
**40<sup>00</sup>**

**RTV RED GASKET MAKER**

70ml

MRGM90  
**55<sup>00</sup>**

**RTV GREY HIGH HEAT +330°C GASKET MAKER**

70ml

MGGM90  
**65<sup>00</sup>**

INCLUDES TUBE NOZZLE AND SQUEEZER



**MIDAS FORMULA+**

**CONTACT ADHESIVE**

50ml

MCA1  
**25<sup>00</sup>**



CAR CARE, ADDITIVES & LUBRICANTS

**CAR CARE & SERVICE PARTS**

**SHIELD** since 1964  
**MIRAPLATE LIQUID CAR POLISH**  
 500ml

SH44  
**50<sup>00</sup>**

SCAN HERE TO DISCOVER MORE ABOUT THIS PRODUCT



**SHIELD** since 1964  
**TYRE SHINE SILICONE**  
 500ml

SH635  
**50<sup>00</sup>**

SCAN HERE TO DISCOVER MORE ABOUT THIS PRODUCT



**Holts**  
**SEALIT LEAK REPAIR**  
 250ml

HREP0101A  
**90<sup>00</sup>**

SCAN HERE TO DISCOVER MORE ABOUT THIS PRODUCT



SCAN HERE TO DISCOVER MORE ABOUT THIS PRODUCT



**SHIELD** since 1964  
**WASH & SHINE KIT**  
 6 Piece  
 Microfibre Applicator Pad  
 Wash & Dry Value Pack  
 Xtreme Shampoo 500ml  
 Sheen Natural Vinyl Rubber and Plastic Care 200ml  
 Air Freshener  
 Windscreen Wash 350ml

SH469  
**199<sup>00</sup>**

**ULTIMOIL**  
**INTERIOR DAZZLE**  
 300ml

UDAZ3  
**80<sup>00</sup>**

SCAN HERE TO DISCOVER MORE ABOUT THIS PRODUCT



**BLUEM**  
**FOAMER ALL-PURPOSE CLEANER**  
 750ml

BLIFOAMER750  
**70<sup>00</sup>**



**Holts**  
**BUG SHIFTER**  
 1L

BUG3  
**50<sup>00</sup>**

SCAN HERE TO DISCOVER MORE ABOUT THIS PRODUCT



**Q20**  
**SUPER MULTI-PURPOSE LUBRICANT**  
 300g

Q20L  
**70<sup>00</sup>**



SETS IN 7 SECONDS

**GLUEDEVIL**  
**GBOND KIT**  
 Industrial adhesive & filling powders

50-GBOND6429  
**60<sup>00</sup>**



**GLUEDEVIL**  
**AUTO TAPE**  
**DOUBLE-SIDED TAPE**  
 0.8mm x 2mm x 1m

50-TAPE6326  
**20<sup>00</sup>**



**GLUEDEVIL**  
**NUT LOCK**  
 6ml

50-NUTLOCK0313  
**35<sup>00</sup>**



**GLUEDEVIL**  
**REAR VIEW MIRROR ADHESIVE**  
 2ml

50-REAR6172  
**75<sup>00</sup>**



**SERVICE PARTS**

**MIDAS** GOLD

EXTREME TEMPERATURES  
 ADVANCED TECHNOLOGY  
 MAINTENANCE FREE  
 FULLY FRAMED GRIDS

Ca Calcium TECHNOLOGY

**24 MONTH WARRANTY**



**BOSCH** Authorized Retailer

**WIPER BLADES**

14"	3397004911	60.00	19"	3397004915	75.00	22"	3397004918	85.00
16"	3397004912	65.00	20"	3397004916	80.00	24"	3397004910	95.00
18"	3397004914	70.00	21"	3397004917	85.00	26"	3397004938	100.00



**TOYOTA HILUX 2.4/2.8 GD6 2015 ONWARDS**

Filter Kit (Air, Fuel, Oil)	<b>FRAM</b> FSA103	590.00
Front Brake Pads	<b>FEND00</b> FDB1698	590.00
Front Brake Discs	<b>FEND00</b> DDF1594X	1 120.00
Front Shock Absorber	<b>MONROE</b> M8096	960.00
Rear Shock Absorber	<b>MONROE</b> M8097	630.00
Glow Plug	<b>NOK</b> Y1060AS	480.00



**ISUZU KB D-MAX 2013 - 2021**

Filter Kit (Air, Cabin, Fuel, Oil)	<b>FRAM</b> FSA70	765.00
Front Brake Pads	<b>FEND00</b> FDB4299	575.00
Front Brake Discs	<b>FEND00</b> DDF2373X	770.00
Front Shock Absorber	<b>MONROE</b> M8088	820.00
Rear Shock Absorber	<b>MONROE</b> M8089	695.00
Glow Plug	<b>NOK</b> Y-1001J1	150.00



**HYUNDAI H100 2.6D 1996 ONWARDS**

Filter Kit (Air, Fuel, Oil)	<b>FRAM</b> FSA101	585.00
Front Brake Pads	<b>FEND00</b> FDB1014	520.00
Front Shock Absorber	<b>MONROE</b> M8047	520.00
Rear Shock Absorber	<b>MONROE</b> M8038	620.00
Glow Plug	<b>NOK</b> Y-115T-1	180.00





**MIDAS PROFESSIONAL Tool Range**

**GREASE GUNS**

500cc **GG01M**  
**290<sup>00</sup>**

300cc **GG02M**  
**280<sup>00</sup>**



**MIDAS PROFESSIONAL Tool Range**

**METRIC HEX KEY SET EXTRA LONG CV**

10 Piece set  
Ball point hex key wrench  
Sizes: 1.5, 2, 2.5, 3, 4, 5, 6, 7, 8, 10mm

**HK10M**  
**110<sup>00</sup>**



**MIDAS PROFESSIONAL Tool Range**

**PLIER SET**

4 Piece set

**PL4M**  
**480<sup>00</sup>**



**MIDAS PROFESSIONAL Tool Range**

**SCREW EXTRACTOR SET CHROME VANADIUM**

5 Piece set  
1/8", 1/4", 5/16", 7/16" & 9/16"

**SE05M**  
**70<sup>00</sup>**



**MIDAS PROFESSIONAL Tool Range**

**1/4" + 3/8" + 1/2" DRIVE TORX SOCKET SET**

14 Piece set  
1/4": e4-8  
3/8": e10, 11, 12, 14  
1/2": e16, 18, 20, 22, 24

**SK14M**  
**280<sup>00</sup>**



**MIDAS PROFESSIONAL Tool Range**

**SPLINE SOCKET SET**

5 Piece set  
55mm  
Sizes: 6, 8, 10, 12, 14mm

**SS55M**  
**180<sup>00</sup>**



**MIDAS PROFESSIONAL Tool Range**

**SPLINE SOCKET SET**

5 Piece set  
100mm  
Sizes: 6, 8, 10, 12, 14mm

**SLS5M**  
**270<sup>00</sup>**



**MIDAS PROFESSIONAL Tool Range**

**1/4" + 3/8" DRIVE TORX SOCKET SET**

9 Piece set

**SK9M**  
**200<sup>00</sup>**



**PREMIUM LIFETIME WARRANTY QUALITY**

**35 PIECE**

**MIDAS PROFESSIONAL Tool Range**

**1/4" DRIVE SOCKET SET IN CASE**

35 Piece set

**SK35M**  
**600<sup>00</sup>**

SCAN HERE TO DISCOVER MORE ABOUT THIS PRODUCT



**AUTO GEAR**



**SMART DIGITAL MULTIMETER**

DC Voltage: 500m-6-60-600V±0.5%  
Resistance: 6-60-600-6k-60k-600k-6m-60m ±1.0%  
Power supply: 1.5V batteries(AAA) x 2

**DT113**  
**390<sup>00</sup>**

**AUTO GEAR**



**SMART DIGITAL MULTIMETER**

DC Voltage: 200m-2 20-200-600V±0.5%  
Resistance: 200-20k-200k-20m ±1.0%  
Power supply: 1.5V batteries (AAA) x 2

**DT136B**  
**180<sup>00</sup>**



SCAN HERE TO DISCOVER MORE ABOUT THIS PRODUCT



**AUTO GEAR**

**OIL DRAIN PAN**

8L

**OP008**  
**60<sup>00</sup>**



**AUTO GEAR**

**CIRCUIT TESTER HEAVY DUTY**

12V

**CT10**  
**60<sup>00</sup>**

**90 PIECE**



**MIDAS PROFESSIONAL Tool Range**

**1/2" + 3/8" DRIVE TOOL KIT**

**TK90M**  
**5300<sup>00</sup>**



**AUTO GEAR**

**PLIER SET**

3 Piece set

**PL3PC**  
**200<sup>00</sup>**



**AUTO GEAR**

**RING SQUEEZERS**

53x125mm

**RS01**  
**100<sup>00</sup>**

60x175mm

**RS02**  
**370<sup>00</sup>**



**AUTO GEAR**

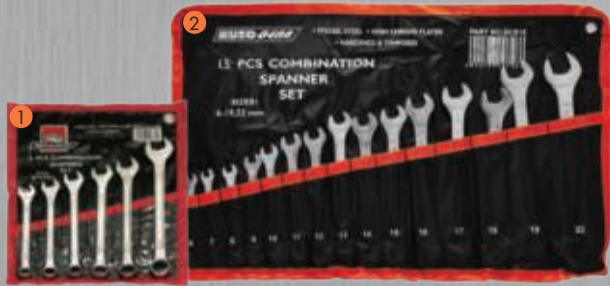
**3-LEG OIL FILTER WRENCHES**

63-100mm

**OW100**  
**130<sup>00</sup>**

65-110mm

**OW120**  
**140<sup>00</sup>**



**AUTO GEAR**

COMBINATION SPANNER SETS

1 6 Piece set

SCS06  
**90<sup>00</sup>**

2 15 Piece set

SCS15  
**240<sup>00</sup>**



**AUTO GEAR**

SCREWDRIVER SET

6 Piece set  
Black tip

SD6006  
**110<sup>00</sup>**



**AUTO GEAR**

SCREWDRIVER SET

22 Piece set

SD22PC  
**250<sup>00</sup>**



**AUTO GEAR**

USB POWERED SOLDERING IRON  
8W

SI008  
**170<sup>00</sup>**



**AUTO GEAR**

OZ LEAD ROSIN CORE SOLDER

20g  
0.75mm

SIC01  
**65<sup>00</sup>**



**108  
PIECE**

**AUTO GEAR**

1/4" + 1/2"  
DRIVE SOCKET SET

SK108PC  
**1200<sup>00</sup>**

SCAN  
HERE TO  
DISCOVER  
MORE  
ABOUT THIS  
PRODUCT



**AUTO GEAR**

TORQUE WRENCH

40-210nm

TOX  
**400<sup>00</sup>**

TOOLS &  
WORKSHOP



**AUTO GEAR**

1/4" DRIVE SOCKET SET

16 Piece set  
Ratchet with TPR grip  
Super lock socket  
Sizes:  
4, 4.5, 5, 5.5, 6, 7, 8, 9, 10,  
11, 12, 13, 14mm  
Extension bar 75 & 100mm

SK16PC  
**360<sup>00</sup>**



**AUTO GEAR**

MULTI SPLINE BIT SETS

Fine

1 Sizes: 5, 6, 8,  
10, 12mm  
1/2" Drive adaptor

SS06F

**70<sup>00</sup>**

2 Coarse  
Sizes: T25, T30, T40,  
T45, T50, T55  
1/2" Drive adaptor

SS07C

**70<sup>00</sup>**

3 Hex  
Sizes: 5, 6, 7, 8,  
10, 12mm  
1/2" Drive adaptor

SS07H

**70<sup>00</sup>**



**AUTO GEAR**

TAP AND DIE SETS

1 20 Piece set

TD20P  
**190<sup>00</sup>**

2 40 Piece set

TD40P  
**300<sup>00</sup>**



**AUTO GEAR**

SHIFTING SPANNER SET

3 Piece set  
150/200/250mm

SSP3PC

**200<sup>00</sup>**

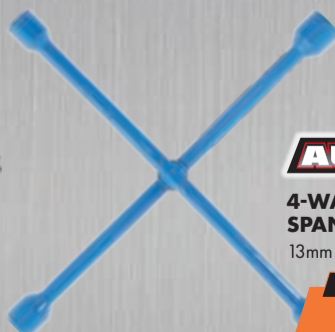


**AUTO GEAR**

FOLDABLE CROSS RIM WRENCH

WS03

**220<sup>00</sup>**



**AUTO GEAR**

4-WAY WHEEL SPANNER

13mm shaft - 17x19x21x23mm

WS04S

**70<sup>00</sup>**



**AUTO GEAR**

4-WAY WHEEL SPANNER

16mm shaft - 17x19x21x23mm

WS44

**100<sup>00</sup>**



**MATWELD**

**WELDER INVERTER MINI COMBO SET**

Combo set includes:  
 MTS chipping hammer 300GR  
 Matsafe green welders gloves Std 50mm  
 Matweld welding helmet with flip front (L)  
 Matweld rod weld gp e6013 2.50mm 1 kg  
 Matweld welder inverter mini 120amp.

MATR199

**899<sup>00</sup>**

- PORTABLE 120A INVERTER DC ARC WELDER
- CRAFTED FROM HIGH-QUALITY MATERIALS
- FOR BOTH PROFESSIONALS AND DIY ENTHUSIASTS

WORKSHOP

**AUTO GEAR**

**FIXED JACK STANDS**



- |                      |                                  |
|----------------------|----------------------------------|
| 2 Ton<br>2 Piece set | JAS2T<br><b>300<sup>00</sup></b> |
| 3 Ton<br>2 Piece set | JAS3T<br><b>500<sup>00</sup></b> |
| 6 Ton<br>2 Piece set | JAS6T<br><b>800<sup>00</sup></b> |

**AUTO GEAR**

**GARAGE CREEPER**

120kg load  
92cm



GC06

**580<sup>00</sup>**



**AUTO GEAR**

**BOOSTER CABLES**

- |                                  |                                     |           |                                    |
|----------------------------------|-------------------------------------|-----------|------------------------------------|
| 120 amp.                         | BBC120<br><b>80<sup>00</sup></b>    | 200 amp.  | BBC200<br><b>90<sup>00</sup></b>   |
| 300 amp.                         | BBC300<br><b>105<sup>00</sup></b>   | 400 amp.  | BBC400<br><b>165<sup>00</sup></b>  |
| 400 amp.<br>with surge protector | BBC400SP<br><b>180<sup>00</sup></b> | 600 amp.  | BBC600<br><b>200<sup>00</sup></b>  |
| 800 amp.                         | BBC800<br><b>400<sup>00</sup></b>   | 1000 amp. | BBC1000<br><b>740<sup>00</sup></b> |



**AUTO GEAR**

**BOTTLE JACKS**

- |       |                                 |
|-------|---------------------------------|
| 2 Ton | JB02<br><b>220<sup>00</sup></b> |
| 4 Ton | JB04<br><b>290<sup>00</sup></b> |



**SafeQuip**  
QUANTITY SOLUTIONS

**FIRE EXTINGUISHERS**

- |                                     |                                 |
|-------------------------------------|---------------------------------|
| 1 1.5kg with plastic bracket        | FE04<br><b>320<sup>00</sup></b> |
| 2 4.5kg with short hose + J bracket | FE06<br><b>570<sup>00</sup></b> |



**AUTOGEAR**

**1100 AMP JUMP STARTER**

1100 amp, 12V AGM  
Jump start 20Ah

JS1100AGM

**2400<sup>00</sup>**



**Pro User**

**LINEAR BATTERY CHARGERS**

12V  
Surge protection. Short circuits and overheating protection. LED display showing charge status and reverse polarity warning

- |        |                                  |        |                                  |
|--------|----------------------------------|--------|----------------------------------|
| 4 amp. | MCH4A<br><b>470<sup>00</sup></b> | 6 amp. | MCH6A<br><b>520<sup>00</sup></b> |
|--------|----------------------------------|--------|----------------------------------|



**4 AMP DC SMART BATTERY CHARGER**

6-12V  
4 stages charging smart battery charger  
fast, slow, winter mode

PSD004

**800<sup>00</sup>**



**8 AMP DC SMART BATTERY CHARGER**

12V  
9 stages charging smart battery charger  
LCD display with backlight  
Built-in battery tester with voltage display

PSD008

**1300<sup>00</sup>**



UNIVERSAL FIT



**AUTO GEAR**

**CARPET MAT SET**

4 Piece set  
Front: 65x42cm  
Rear: 42x31cm  
Black

MA55

**200<sup>00</sup>**



UNIVERSAL FIT



**AUTO GEAR**

**CARPET MAT SET**

4 Piece set  
Front: 67x44cm  
Rear: 44x28cm  
Black

MA56

**370<sup>00</sup>**



UNIVERSAL FIT



**AUTO GEAR**

**RUBBER MAT SET**

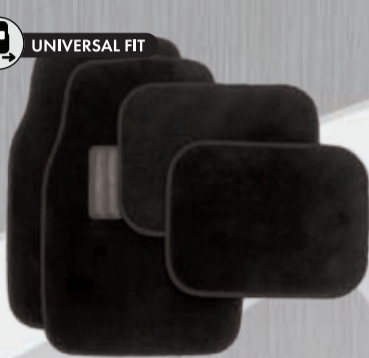
4 Piece set  
Front: 69x45cm  
Rear: 45x35cm  
Available in  
black or grey

MA27BK/GY

**280<sup>00</sup>**



UNIVERSAL FIT



**AUTO GEAR**

**CARPET MAT SET**

4 Piece set  
Front: 65x42cm  
Rear: 44x33cm  
Available in  
black with blue/black/grey trim

MA-BE/BK/GY

**170<sup>00</sup>**



**MICHELIN**

**RUBBER MAT SET**

4 Piece set  
Available in  
black or grey

TT8421BK/GR

**650<sup>00</sup>**



**AUTO GEAR**

**LUGGAGE  
BOOT MAT**

900x500x30mm

BM004

**130<sup>00</sup>**

STYLING



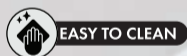
**AUTO GEAR**

**SPRINTER SEAT  
COVER SET**

6 Piece set  
Available in black/black &  
blue/black & grey/black & red

SA160/1/2/3

**230<sup>00</sup>**



EASY TO CLEAN



UNIVERSAL FIT



**AUTO GEAR**

**AUSTIN SEAT  
COVER SET**

11 Piece set  
Available in black with grey  
or red trimming

SA600/1

**400<sup>00</sup>**



EASY TO CLEAN



UNIVERSAL FIT



**AUTO GEAR**

**BOSTON SEAT  
COVER SET**

9 Piece set  
Black & grey

SA85

**320<sup>00</sup>**



EASY TO CLEAN



UNIVERSAL FIT



**AUTO GEAR**

**MELBOURNE SEAT  
COVER SET**

11 Piece set  
Available in black & grey  
or black & red

SA92/3

**350<sup>00</sup>**



EASY TO CLEAN



UNIVERSAL FIT



**AUTO GEAR**

**DELUXE SEAT CUSHION**  
1 Piece  
Black, red & white

CS09  
**470<sup>00</sup>**



**AUTO GEAR**

**CAR COOL TROPICAL PALMS**  
68x140cm

CL11  
**85<sup>00</sup>**



**AUTO GEAR**

**ANTI-UV AND INFRARED WINDOW FILM**

Available in light grey, dark grey, super dark grey, light black, dark black or super dark black

WF01/1D/1SD  
WF05/5D/5SD  
**50<sup>00</sup>**



**AUTO GEAR**

**UNIVERSAL PHONE HOLDER**  
Suction type  
Black & blue

UHM05  
**100<sup>00</sup>**



**AUTO GEAR**

**UNIVERSAL PHONE HOLDER**  
Suction type  
Black

UHM04  
**100<sup>00</sup>**



**AUTO GEAR**

**CARBON DRINK HOLDER**  
Air vent mount  
Available in red or chrome

DH008/9  
**135<sup>00</sup>**



**AUTO GEAR**

**MR. ALLIGATOR STEERING LOCK**  
Instant ratchet lock  
71 cm

SL12  
**320<sup>00</sup>**



**AUTO GEAR**

**GUTTERLESS ROOF RACK**  
2 Piece set  
1220mm roof rack  
Includes mounting fittings

RR2  
**900<sup>00</sup>**

STYLING

**AUTO GEAR** **WHEEL COVER SETS**  
4 Piece set



1 13" Silver  
WC01-13  
**360<sup>00</sup>**

2 14" Silver  
WC05-14  
**395<sup>00</sup>**

3 14" Matt black & silver  
WCF04-14  
**530<sup>00</sup>**



**AUTO GEAR**

**TWIN HOOTERS**  
12V

HT060  
**80<sup>00</sup>**

**AUTOGEAR X** **STEERING WHEEL COVERS**



Black Small  
SW50M  
**150<sup>00</sup>**

Black Medium  
SW51M  
**160<sup>00</sup>**

Black Large  
SW52M  
**170<sup>00</sup>**

**AUTO GEAR** **STEERING WHEEL COVERS**



38cm Black Carbon fibre dynamic  
SWC13  
**180<sup>00</sup>**

37.5cm Black Flat base  
SWCF01  
**170<sup>00</sup>**

MAXIMUM MUSIC POWER  
**400W**



**AUTO GEAR**

**6" 3-WAY CAR SPEAKERS**  
2 Piece set  
400W

SK03  
**360<sup>00</sup>**

MAXIMUM MUSIC POWER  
**1000W**



**AUTO GEAR**

**6X9" 5-WAY CAR SPEAKERS**  
2 Piece set  
1000W

SK04  
**600<sup>00</sup>**



Stand a chance to  
**Win** 1 of 100  
Jerseys

- 1 Buy 5L or more of Shell Helix HX7, HX8 or Helix Ultra
- 2 WhatsApp Shell Helix to 0872500071
- 3 Fill in the prompts and upload your slip
- 4 Stand a chance to win your share of SA supporter jerseys



Promo Valid 01 March - 30 April 2026  
Promo only valid in RSA  
T's and C's Apply

**Willard** Batteries  
THE POWER OF TECHNOLOGY

**SUMMER Chill**  
PROMOTION



**FREE**

5L cooler bag when you buy and register any Willard battery.

**23 March to 15 April '26**



ONLY AT PARTICIPATING MIDAS STORES AND ONLY WHILE STOCKS LAST.

Terms and conditions apply.

EVERY PRO NEEDS A PAIR OF

**PROpods**

**WIN**  
A PAIR OF LIMITED EDITION PROpods BY SPENDING R1500 ON FAI PRO PRODUCTS DURING THE PROMOTION



ACTIVE NOISE CANCELLATION

MAGSAFE WIRELESS CHARGING CASE

HOW IT WORKS:

- SIMPLY SCAN THE QR CODE IN-STORE, UPLOAD YOUR RECEIPT AND INPUT YOUR DETAILS
- EVERY DAY OF THE PROMOTION (23 MARCH TO 12 APRIL 2026), 70 LUCKY CUSTOMERS WILL WIN A LIMITED EDITION PAIR OF FAI PRO PROpods
- PRIZES ARE NOT TRANSFERABLE AND MAY NOT BE EXCHANGED FOR CASH
- WINNERS CONSENT TO THE USE OF THEIR NAMES ON MIDAS SOCIAL MEDIA PLATFORMS
- RSA Only

1400 PAIRS OF PROpods UP FOR GRABS!



SHOCK ABSORBERS



BRAKE DISCS & DRUMS



STEERING & SUSPENSION



WHEEL BEARINGS



STARTERS & ALTERNATORS

**JUST ARRIVED: DRIVE SHAFTS & CV JOINTS**



FROM START TO STOP, OWN YOUR DRIVE WITH FAI PRO

ALL FAI PRO PRODUCTS ARE BACKED BY WARRANTIES FOR PEACE OF MIND

PARTS ADVICE: BRINGING IN A SAMPLE OF THE PART YOU NEED, LIKE BRAKE PADS OR AN AIR FILTER, CAN HELP ENSURE THAT YOU GET THE RIGHT PART!

VISIT OUR STORES FOR A WIDE RANGE OF

COOLING

BRAKING

SUSPENSION

BATTERIES

LIGHTS

TUNE-UP



Follow us on facebook



Prices valid from 23 March to 12 April 2026. Cash or credit card only. Prices valid in RSA and Lesotho only. Unless we state a specific limitation, Midas will attempt to have sufficient advertised stock available to meet consumers' anticipated needs. Should we still run out of stock, we will attempt to obtain the stock or we will offer you a reasonable alternative. At Midas, we take special care to ensure that the adverts placed are correct. If a mistake occurs or incomplete information is printed, we will display a notice in-store with all the correct details. Prices include 15% VAT.